

Type 1279 Duragauge® Pressure Gauge Available With PLUS!™ Performance Option



- **Solid front case design, field convertible to hermetically sealed or liquid filled style**
- **Pressure ranges from vacuum — 30,000 psi.**
- **Select from various socket and Bourdon tube materials.**
- **Micrometer adjustable pointer.**
- **400 Series stainless steel movement wears better for longer life**
- **Teflon-coated pinion for longer life**
- **Patented Duratube™ with welded-tube construction controls stresses for longer life**
- **PLUS!™ Performance Option:**
 - **Liquid-filled performance in a dry gauge**
 - **Fights vibration and pulsations without liquid-filled headaches**
 - **Order as option XLL**

The Ashcroft® Duragauge® pressure gauge is the finest production gauge on the market for industrial use where precise indications are required. The product line offers a wide variety of case styles, Bourdon tubes and pressure ranges to meet your application needs .

With the component combinations available in the Duragauge gauge line, over ten million variations are possible to serve the needs of all types of industries, including process, power, nuclear, aerospace and cryogenics.

PRODUCT SPECIFICATIONS

- Model Number:** 1279
- Accuracy:** ½% full scale (Grade 2A, ASME B40.100)
- Ranges:** Vac., compound to 30,000 psi
- Dial Size:** 4½" diameter
- Case Material:** Black phenolic, solid front
- Weather Protection:** Dry Case: IP54
Liquid filled or hermetically sealed case: IP 65
- Ring:** Threaded reinforced black polypropylene
- Window:** Glass
- Dial:** Aluminum, white background, black figures and intervals.
- Pointer:** Micrometer adjustable

- Movement:** Rotary, 400 SS, Teflon® coated pinion gear and segment
- Bourdon Tube and Socket:** C510 Phos. bronze/brass brazed (A)
316L SS/steel (R)
316L SS/316L SS (S)
K Monel/ Monel (P)

- Connection Size:** ¼", ½" NPT
- Connection Location:** Lower or back

OPTIONAL FEATURES

- Fill:** L-Glycerin-Standard
XGV-Silicone-Optional
XGX-Halocarbon-Optional

- PLUS! Performance:** XLL

- Hermetically Sealed, IP65:** H

- Flush Mounting Ring:** X56

- Receiver Gauge:** XPR

- Shatter Proof Glass Window:** XSG

- Acrylic Window:** XPD

- Red Set Hand:** XSH

- Maximum Pointer:** XEP

STANDARD RANGE TABLE*

Pressure – psi				
Range	Figure Interval		Minor Graduation	
0/15	1		0.1	
0/30	5		0.2	
0/60	5		0.5	
0/100	10		1	
0/160	20		2	
0/200	20		2	
0/300	50		2	
0/400	50		5	
0/600	50		5	
0/800	100		10	
0/1000	100		10	
0/1500	200		20	
0/2000	200		20	
0/3000	500		20	
0/5000	500		50	
0/6000	500		50	
0/10,000	1000		100	
0/20,000	2000		200	
0/30,000	5000		200	

Compound				
Range	Figure Interval		Minor Grads	
	in Hg	psi	in Hg	psi
30" Hg/15 psi	5	3	0.5	0.2
30" Hg/30 psi	10	5	1	0.5
30" Hg/60 psi	10	10	1	1
30" Hg/100 psi	10	10	2	1
30" Hg/150 psi	10	20	5	2
30" Hg/200 psi	30	20	5	2
30" Hg/300 psi	30	50	5	2

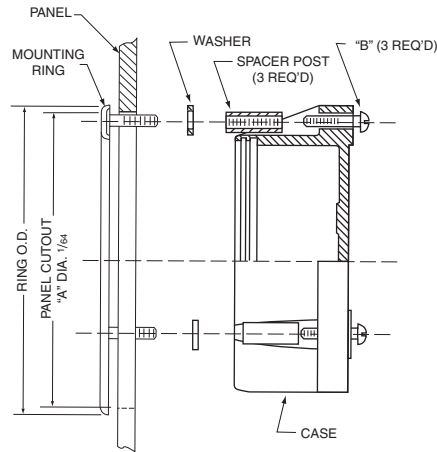
Vacuum		
Range	Figure Interval	Minor Grads
30/0 in. Hg	5 in	0.2 in
34/0 ft H ₂ O	5 ft	0.5 ft

*Full standard and metric equivalent range table available on our web site.

Type 1279 Duragauge® Pressure Gauge Available With PLUS!™ Performance Option

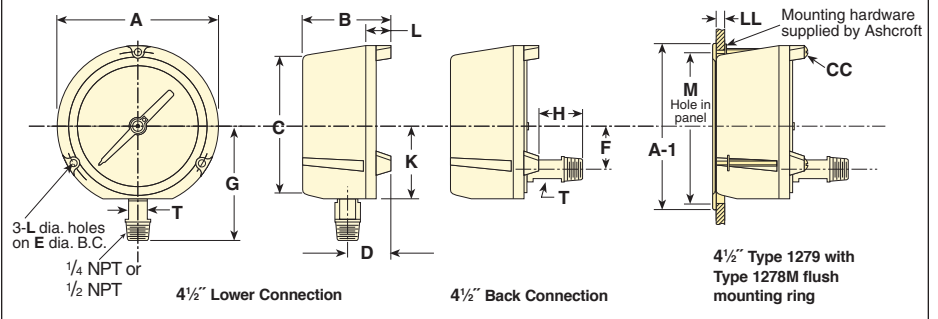
TYPE 1278M SERIES FLUSH MOUNTING RING

Used to flush mount gauge case Type 1279(*)S. Standard finish is black; polished stainless steel finish is available at an extra charge.



Gauge Size	Ring O.D.	"A" DIA.	"B" Size of 3 Screws	"C" Size of Washers
4 1/2	6.000 (152)	5 5/8 (148)	#10-24 x 1 5/8	7/16 x 1 7/64 x 5/8

Dimensions



Dial Size Inches	A	B	C	D	E	F	G	H	K	L	T	V	Weight (lbs)
4 1/2	5.81 (147.6)	3.36 (85.3)	5.07 (128.7)	1.06 (40.6)	5.375 (137)	1.62 (41.2)	4.08 (103.7)	.73 (18.4)	2.62 (66.6)	.22 (5.5)	.62 (15.7)	2.625 (67)	2 1/2

Table A - Case selection & mounting

Dial Size (in)	Ordering Code	Case Type	Case: Material Finish	Ring: Style Material Finish	Mounting / Connection
4 1/2	(45)	1279 ⁽¹⁾	Phenolic (Black)	Threaded Reinforced Polypropylene - Black	Stem - Lower or back Surface - Lower or back Flush - Back: Specify X56

Table B - System Location and Connection Bourdon Tube & Tip Material⁽²⁾

(all joints TIG welded except code "A")	Socket Material ⁽²⁾	Tube & Socket Code	Case Style Code	NPT Conn. & Code	Conn. Location & Code	Range Selection Limits (psi)
C510 Grade A Phosphor Bronze Tube, Brass Tip, Silver Brazed	Brass	(A)	(S) Solid Front	(02) 1/4	Lower (L)	Vac./1000
316 stainless steel	1018 steel	(R)	(S) Solid Front			Vac./20,000
316 stainless steel	316 SS	(S)	(S) Solid Front	(04) 1/2 ⁽⁴⁾	Back (B)	Vac./20,000
K 500 Monel ⁽³⁾	Monel 400	(P)	(S) Solid Front			Vac./30,000

NOTES:

- Liquid-fillable or hermetically sealed when kit 101A202-01 (lower) or kit 101A203-01 (back) is ordered.
- For selection of the correct Bourdon system material see the media application table.
- Use on applications where NACE MR-01-75 is specified for selection of the correct Bourdon system material.
- 30,000 psi range supplied with 1/2 high pressure connection, 1/2 NPT optional.

HOW TO ORDER:

45 1279 RS* 04L XXX 0/2000 psi

From Table A, Dial Size: 4 1/2 : _____

From Table A, Case Type Number: 1279 _____

From Table B, Bourdon tube and socket: _____

From Table B, Connection: 1/4 NPT (02), 1/2 NPT (04), Lower (L), Back (B) _____

From Optional Features: _____

From Range Table: 2000 psi _____

(*) "S" denotes solid front case design
If glycerin filled case, substitute "L" instead of "S"