

## Range Tables

### Standard Ranges

| Pressure – psi |                 |                  |
|----------------|-----------------|------------------|
| Range          | Figure interval | Minor graduation |
| 0/15           | 1               | 0.1              |
| 0/30           | 5               | 0.2              |
| 0/60           | 5               | 0.5              |
| 0/100          | 10              | 1                |
| 0/160          | 20              | 2                |
| 0/200          | 20              | 2                |
| 0/300          | 50              | 2                |
| 0/400          | 50              | 5                |
| 0/600          | 50              | 5                |
| 0/800          | 100             | 10               |
| 0/1000         | 100             | 10               |
| 0/1500         | 200             | 20               |
| 0/2000         | 200             | 20               |
| 0/3000         | 500             | 20               |
| 0/5000         | 500             | 50               |
| 0/6000         | 500             | 50               |
| 0/10,000       | 1000            | 100              |
| 0/20,000       | 2000            | 200              |
| 0/30,000       | 5000            | 200              |
| 0/50,000       | 5000            | 500              |
| 0/80,000       | 10,000          | 1000             |
| 0/100,000      | 10,000          | 1000             |

| Compound       |                 |     |                  |     |
|----------------|-----------------|-----|------------------|-----|
| Range          | Figure interval |     | Minor graduation |     |
|                | in Hg           | psi | in Hg            | psi |
| 30" Hg/15 psi  | 5               | 3   | 0.5              | 0.2 |
| 30" Hg/30 psi  | 10              | 5   | 1                | 0.5 |
| 30" Hg/60 psi  | 10              | 10  | 1                | 1   |
| 30" Hg/100 psi | 10              | 10  | 2                | 1   |
| 30" Hg/150 psi | 10              | 20  | 5                | 2   |
| 30" Hg/200 psi | 30              | 20  | 5                | 2   |
| 30" Hg/300 psi | 30              | 50  | 5                | 2   |
| 30" Hg/400 psi | 30              | 50  | 5                | 5   |
| 30" Hg/500 psi | 30              | 50  | 5                | 5   |
| 30" Hg/600 psi | 30              | 50  | 10               | 5   |

| Combination |                           |                 |                     |                  |                     |
|-------------|---------------------------|-----------------|---------------------|------------------|---------------------|
| Range       |                           | Figure interval |                     | Minor graduation |                     |
| inner-psi   | outer-ft H <sub>2</sub> O | psi             | ft H <sub>2</sub> O | psi              | ft H <sub>2</sub> O |
| 0/15        | 0/34                      | 3               | 5                   | 0.5              | 0.5                 |
| 0/30        | 0/70                      | 5               | 10                  | 0.5              | 1                   |
| 0/60        | 0/140                     | 5               | 20                  | 0.5              | 5                   |
| 0/100       | 0/230                     | 10              | 20                  | 1                | 2                   |
| 0/160       | 0/370                     | 20              | 50                  | 2                | 5                   |
| 0/200       | 0/460                     | 20              | 50                  | 5                | 5                   |
| 0/300       | 0/690                     | 25              | 100                 | 5                | 10                  |

| Vacuum                   |                 |                  |
|--------------------------|-----------------|------------------|
| Range                    | Figure interval | Minor graduation |
| 30/0 in. Hg              | 5 in            | 0.2 in           |
| 34/0 ft H <sub>2</sub> O | 5 ft            | 0.5 ft           |

| Retard                                |                      |                  |
|---------------------------------------|----------------------|------------------|
| Range                                 | Figure interval      | Minor graduation |
| 0/15 psi retard to 30 psi             | 1 psi-30 psi         | 0.25 psi-5 psi   |
| 0/30 psi retard to 60 psi             | 2 psi-60 psi         | 0.2 psi-10 psi   |
| 0/60 psi retard to 100 psi            | 2 psi-100 psi        | 0.5 psi-10 psi   |
| 30" Hg vac/75 psi retard to 150 psi   | 5" Hg/15 psi-150 psi | 1" Hg/1 psi-5psi |
| 10" Hg vac/5 psi retard to 30" Hg vac | 2" Hg/1 psi          | 0.2" Hg/0.1 psi  |
| retard to 30" Hg vac                  | 30" Hg               | 5" Hg            |
| retard to 30 psi                      | 30 psi               | 5 psi            |

### Metric Ranges

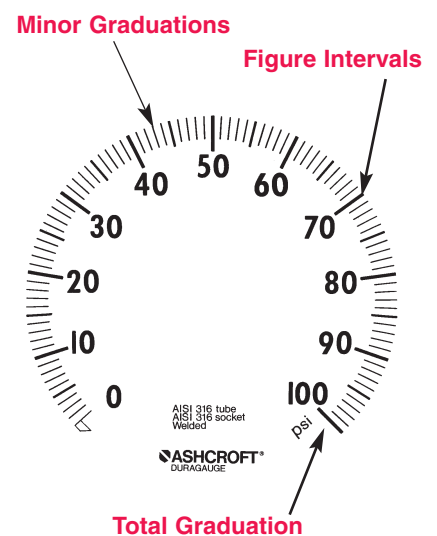
| Pressure – kg/cm <sup>2</sup> and bar |                 |                  |                    |
|---------------------------------------|-----------------|------------------|--------------------|
| Range                                 | Figure interval | Minor graduation | Outer scale in psi |
| 0/1                                   | 0.1             | 0.01             | 0/14               |
| 0/1.6                                 | 0.2             | 0.02             | 0/22               |
| 0/2.5                                 | 0.5             | 0.02             | 0/35               |
| 0/4                                   | 0.5             | 0.05             | 0/55               |
| 0/6                                   | 0.5             | 0.05             | 0/85               |
| 0/10                                  | 1               | 0.1              | 0/140              |
| 0/16                                  | 2               | 0.2              | 0/220              |
| 0/25                                  | 5               | 0.2              | 0/350              |
| 0/40                                  | 5               | 0.5              | 0/550              |
| 0/60                                  | 5               | 0.5              | 0/850              |
| 0/100                                 | 10              | 1                | 0/1400             |
| 0/160                                 | 20              | 2                | 0/2200             |
| 0/250                                 | 50              | 2                | 0/3500             |
| 0/400                                 | 50              | 5                | 0/5500             |
| 0/600                                 | 50              | 5                | 0/8500             |
| 0/1000                                | 100             | 10               | 0/14,000           |
| 0/1600                                | 200             | 20               | 0/22,000           |
| 0/2500                                | 500             | 20               | 0/35,000           |
| 0/4000                                | 500             | 50               | 0/55,000           |
| 0/6000                                | 1000            | 50               | 0/85,000           |

| Compound – kg/cm <sup>2</sup> and bar |                 |                  |                    |
|---------------------------------------|-----------------|------------------|--------------------|
| Range                                 | Figure interval | Minor graduation | Outer scale in psi |
| -1/0/1.5                              | 0.2             | 0.02             | 30" Hg/20          |
| -1/0/3                                | 0.5             | 0.05             | 30" Hg/40          |
| -1/0/5                                | 0.5             | 0.05             | 30" Hg/70          |
| -1/0/9                                | 1               | 0.01             | 30" Hg/125         |
| -1/0/15                               | 2               | 0.02             | 30" Hg/215         |
| -1/0/24                               | 5               | 0.02             | 30" Hg/340         |

| Vacuum – kg/cm <sup>2</sup> and bar |                 |                  |             |
|-------------------------------------|-----------------|------------------|-------------|
| Range                               | Figure interval | Minor graduation | Outer scale |
| -1/0                                | 0.1             | 0.01             | 30" Hg      |

### Graduations and figure intervals

All Ashcroft dials have various total graduation marks, figure intervals and minor graduations. Standard dual scale metric ranges have a dominant metric inner scale. The outer scale is specified in psi. Some examples are shown. Duragauge gauges are made in accordance with ASME B40.1 entitled, "Gauges, Pressure, Indicating Dial Type – Elastic Element," Accuracy grade 2A ( $\pm 0.5\%$  of span). The accuracy of a retard range gauge applies only to the expanded portion of the scale. The error in the compressed portion is  $-10\%$  to  $+20\%$  of the span. Maximum pressure at which a gauge is continually operated should not exceed 75% of full scale range. Consult customer service in Stratford, CT for non-standard dials.

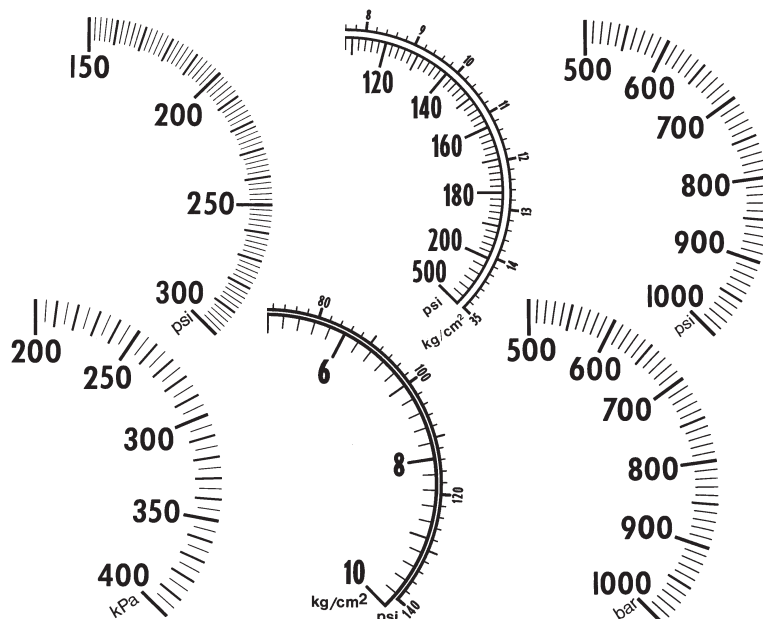


## Range Tables

### Metric Ranges

| Pressure – (kPa) kilopascal |                 |                  |                    |
|-----------------------------|-----------------|------------------|--------------------|
| Range                       | Figure interval | Minor graduation | Outer scale in psi |
| 0/100                       | 10              | 1                | 0/14               |
| 0/160                       | 20              | 2                | 0/22               |
| 0/250                       | 50              | 2                | 0/35               |
| 0/400                       | 50              | 5                | 0/55               |
| 0/600                       | 50              | 5                | 0/85               |
| 0/1000                      | 100             | 10               | 0/140              |
| 0/1600                      | 200             | 20               | 0/220              |
| 0/2500                      | 500             | 20               | 0/350              |
| 0/4000                      | 500             | 50               | 0/550              |
| 0/6000                      | 500             | 50               | 0/850              |
| 0/10,000                    | 1000            | 100              | 0/1400             |
| 0/16,000                    | 2000            | 200              | 0/2200             |
| 0/25,000                    | 5000            | 200              | 0/3500             |
| 0/40,000                    | 5000            | 500              | 0/5500             |
| 0/60,000                    | 5000            | 500              | 0/8500             |
| 0/100,000                   | 10,000          | 1000             | 0/14,000           |
| 0/160,000                   | 20,000          | 2000             | 0/22,000           |
| 0/250,000                   | 50,000          | 2000             | 0/35,000*          |
| 0/400,000                   | 50,000          | 5000             | 0/55,000*          |
| Compound – (kPa) kilopascal |                 |                  |                    |
| Range                       | Figure interval | Minor graduation | Outer scale in psi |
| -100/0/150                  | 50              | 5                | 30" Hg/20          |
| -100/0/300                  | 50              | 5                | 30" Hg/40          |
| -100/0/500                  | 50              | 10               | 30" Hg/70          |
| -100/0/900                  | 100             | 10               | 30" Hg/125         |
| -100/0/1500                 | 200             | 20               | 30" Hg/215         |
| -100/0/2400                 | 500             | 20               | 30" Hg/340         |
| Vacuum – (kPa) kilopascal   |                 |                  |                    |
| Range                       | Figure interval | Minor graduation | Outer scale        |
| -100/0                      | 10              | 1                | 30" Hg             |

\* 200° Arc



### Receiver gauge

These ranges apply to any unit of pressure, temperature, liquid level, flow, or other value specified. Units in psi pressure will be denoted on the dial unless specified. Available with input ranges of 3-15 psi or 3-27 psi.

### Receiver Gauge Ranges

|      |          |         |           |
|------|----------|---------|-----------|
| 0/1  | 0/75     | 30/80   | 100/600   |
| 0/2  | 0/80     | 5/110   | 200/700   |
| 0/3  | 0/85     | 20/120  | 100/800   |
| 0/4  | 0/90     | 40/120  | 200/800   |
| 0/5  | 0/95     | 20/150  | 300/800   |
| 0/6  | 0/100    | 30/150  | 400/800   |
| 0/7  | 0/120    | 40/150  | 450/800   |
| 0/8  | 0/140    | 50/150  | 500/800   |
| 0/9  | 0/160    | 30/180  | 650/800   |
| 0/10 | 0/180    | 130/180 | 200/900   |
| 0/11 | 0/200    | 100/200 | 400/900   |
| 0/12 | 0/250    | 20/220  | 700/900   |
| 0/14 | 0/300    | 40/220  | 200/1000  |
| 0/15 | 0/350    | 30/240  | 400/1000  |
| 0/16 | 0/400    | 100/240 | 500/1000  |
| 0/17 | 0/500    | 30/250  | 600/1000  |
| 0/18 | 0/600    | 50/250  | 800/1000  |
| 0/19 | 0/700    | 100/250 | 200/1100  |
| 0/20 | 0/760    | 30/300  | 400/1200  |
| 0/21 | 0/800    | 50/300  | 500/1200  |
| 0/25 | 0/900    | 80/300  | 600/1200  |
| 0/26 | 0/1000   | 100/300 | 1000/1500 |
| 0/28 | 0/1500   | 50/350  | 300/1600  |
| 0/30 | 0/2000   | 80/350  | 1000/1600 |
| 0/35 | 0/3000   | 150/350 | 600/1800  |
| 0/40 | 0/4000   | 100/400 | 900/1800  |
| 0/45 | 0/5000   | 150/400 | 1200/1800 |
| 0/50 | 0/10,000 | 50/500  | 700/2000  |
| 0/55 | 0/15,000 | 100/500 | 1000/2500 |
| 0/60 | 0/20,000 | 200/500 | 1500/2500 |
| 0/65 | 0/30,000 | 300/500 | 900/3000  |
| 0/70 | 0/50,000 | 200/700 | 1500/3000 |

### Square Root Ranges

|      |       |        |          |
|------|-------|--------|----------|
| 0/5  | 0/70  | 0/300  | 0/1500   |
| 0/10 | 0/80  | 0/350  | 0/2000   |
| 0/15 | 0/90  | 0/400  | 0/3000   |
| 0/20 | 0/100 | 0/500  | 0/4000   |
| 0/25 | 0/125 | 0/600  | 0/5000   |
| 0/30 | 0/150 | 0/700  | 0/10,000 |
| 0/40 | 0/175 | 0/800  |          |
| 0/50 | 0/200 | 0/900  |          |
| 0/60 | 0/250 | 0/1000 |          |

### Compound Ranges

|                  |
|------------------|
| 30" Hg/0/15 psi  |
| 30" Hg/0/30 psi  |
| 30" Hg/0/60 psi  |
| 30" Hg/0/100 psi |
| 30" Hg/0/150 psi |
| 30" Hg/0/500 psi |
| 30" Hg/0/800 psi |