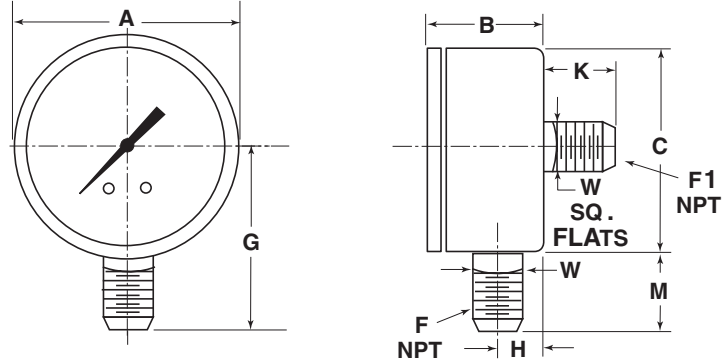


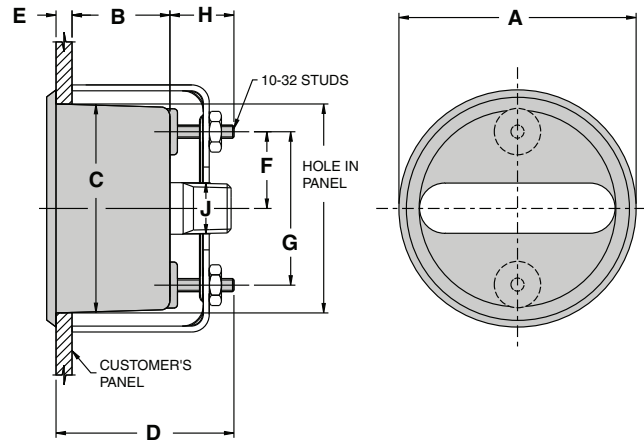
Type 1005P Commercial Gauge

GAUGE DIMENSIONS



DIAL SIZE inches (mm)	A		B		C	F NPT	F1 NPT	G	H	K	M	W		WEIGHT (ozs)
	LOWER	BACK	LOWER	BACK								LOWER	BACK	
1½"	1.66 (42)	1.64 (42)	1.07 (27)	1.01 (26)	1.60 (41)	⅛ or ¼	⅛	1.41 (36)	0.38 (10)	0.62 (16)	0.62 (16)	0.56 (14)	0.44 (11)	1.5
2"	2.11 (54)	2.11 (54)	1.07 (27)	1.05 (27)	2.05 (52)	⅛ or ¼	⅛ or ¼	1.85 (47)	0.38 (10)	0.85 (22)	0.82 (21)	0.56 (14)	0.56 (14)	2.6
2½"	2.74 (70)	2.74 (70)	1.12 (28)	1.14 (29)	2.67 (68)	⅛ or ¼	⅛ or ¼	2.18 (55)	0.38 (10)	0.78 (20)	0.83 (21)	0.56 (14)	0.56 (14)	3.3
3½"	3.70 (94)	3.70 (94)	1.14 (29)	1.28 (32)	3.62 (92)	⅛ or ¼	⅛ or ¼	2.72 (69)	0.47 (12)	0.72 (18)	0.92 (23)	0.56 (14)	0.56 (14)	5.4

PANEL MOUNT SLEEVE DIMENSIONS (ordered as an accessory kit)



ABS CASE PANEL MOUNT SLEEVE										
INCHES (MM)	A	B	C	D	E	F	G	H	J	Conn. NPT
1½"	2.05 (52)	1.04 (27)	1.75 (45)	1.85 (47)	0.13 (3)	.60 (14)	1.19 (30)	0.68 (18)	⅞ sq. (11)	⅛
2"	2.52 (64)	1.04 (27)	2.23 (57)	1.89 (48)	0.17 (4)	.82 (21)	1.63 (41)	0.68 (18)	⅞ sq. (14)	⅛ or ¼
2½"	3.17 (81)	1.13 (29)	2.84 (72)	1.98 (50)	0.17 (4)	1.13 (29)	2.26 (57)	0.68 (18)	⅞ sq. (14)	⅛ or ¼
3½"	4.08 (104)	1.23 (31)	3.80 (96)	2.11 (54)	0.20 (5)	1.61 (41)	3.22 (82)	0.68 (18)	⅞ sq. (14)	⅛ or ¼

PANEL CUT OUT		
INCHES (MM)	Min.	Max.
1½"	1.850 (47)	1.968 (50)
2"	2.330 (59)	2.440 (62)
2½"	2.920 (74)	3.075 (78)
3½"	3.898 (99)	4.016 (102)