

# GC30 Differential Pressure Transducer

## Features

- Combination of digital pressure gauge, switch and transducer
- Simple “push-button” configurability allows user to adjust switch settings, analog scaling
- Numerous standard ranges available

## Typical Uses

- Filter monitoring
- Clean room pressure differential
- Vacuum/Suction pressure sensing & control
- Fan speed control
- Alarm and control



**GC30**  
Differential Pressure Transducer



## Key Benefits

- Ultra-compact design
- User may configure analog output scaling to any range within full scale of sensor range.

## Performance Specifications

Reference Temperature:	73 °F (23 °C)
<b>Analog Output:</b>	1-5 Vdc
Accuracy:	±1.5% of span Accuracy linearity, hysteresis and repeatability (URL)
Response Time:	50 ms
Output Resolution:	25 mV
Analog Scaling:	User may configure analog output scaling to any range within F.S. of sensor range

## Pressure Switch Output:

Type:	NPN/PNP open collector up to 30 Vdc/80 mA
Setting Accuracy:	±1.5% of span (URL)
Number of Contacts:	2
Time Delay:	5 ms-2 sec (selectable)
Hysteresis:	Variable deadband (by user)
Switch Setting:	User may adjust switch actuation and dead-band to any points within full scale sensor range

## Display:

Type:	3½ digit, 10 mm LED
Accuracy:	±1.5% of span + last digit (URL)
Display Setting:	User may re-configure display scaling, set to capture MIN or MAX value, and adjust display update rate

## Environmental Specifications

Temperature Effects: (ref. 73°F (23°C))	Zero/Span: ±0.09%/°F (±0.15%/°C): ±2.5" W.C., 0/2.5" W.C. and below ±0.06%/°F (±0.10%/°C): ±5.0" W.C., 0/5.0" W.C. and above
Temperature Limits:	Storage: -22 °F to 140 °F (-30 °C to 60 °C) Operating: -4 °F to 140 °F (-20 °C to 60 °C) Compensated: 14 °F to 122 °F (-10 °C to 50 °C)
Humidity:	0-85% RH, Non-condensing

## Functional Specifications

Max Static (Line) Pressure:	Proof:	Burst:
7.5 psi (50 kPa)	7.5 psid (50 kPa)	25 psig (170 kPa)

CE Compliance EN61326-1 2006, EN61326-2-3 2006

## Electrical Specifications


### Power Supply Requirements:

Supply Voltage:	11-27 Vdc
Current Consumption:	30 mA (Max.)

### Switch Contacts:

NPN:	30 Vdc / 80 mA (Max.)
PNP:	Voltage drop 1 Vdc (Max.) / 80 mA (Max.)

## Contact Us

1 800-328-8258  
 ashcroft.com

All specifications are subject to change without notice. All sales subject to standard terms and conditions.

Ashcroft® and Trust the Shield® are trademarks of Ashcroft Inc. For more information, see [Ashcroft Brands & Trademarks](#)

©2026 Ashcroft Inc. GC-30\_transducer\_ds\_RevC\_20-April-26

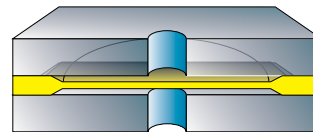
# GC30 Differential Pressure Transducer

## Physical Specifications

Pressure Connection Size:	4 mm barb
Environmental Rating:	IP40
Weight:	Approx. 75 grams
Mounting:	Panel mounting bracket included
Electrical Connection:	6' cable pigtail

Featuring a highly reliable variable capacitance sensor using the patented Ashcroft® Si-Glass® sensor. This ultra-thin single crystal diaphragm provides inherent sensor repeatability and stability.

## Sensor Cross Section



The silicon diaphragm sensor has no glues or other organics to contribute to drift or mechanical degradation over time.

## Wetted Material

Media

Clean, dry air/gas compatible with Aluminum, Titanium, ABS, Ceramic, Silicon & Silicone RTV.  
**NOT FOR USE ON LIQUIDS**

## Non-Wetted

Enclosure

ABS, polycarbonate, aluminum

## Ordering Code

Example:

**GC30 9 M5B 1 N F4 P25IWL - XRH**

### Model

GC30 - Ultra-compact digital differential pressure sensor

GC30

### Accuracy

9 - ±1.5% of span

9

### Pressure Connection

M5B - 4mm ID Barb

M5B

### Output Signal

1 - 1-5 Vdc

1

### Switch Type

P - PNP type open collector (80 mA Max)

N - NPN type open collector (30 Vdc/80 mA Max)

N

### Electrical Connection

F4 - 6 ft. braided shielded cable

F4

### Pressure Range

#### Bidirectional (compound)

P25IWL - ±0.25 IWC

P25IWL

P5IWL - ±0.5 IWC

1IWL - ±1.0 IWC

2P5IWL - ±2.5 IWC

5IWL - ±5 IWC

10IWL - ±10 IWC

25IWL - ±25 IWC

#### Unidirectional (differential or gauge)

P25IW - 0.25 IWC

P5IW - 0.5 IWC

1IW - 1.0 IWC

2P5IW - 2.5 IWC

5IW - 5 IWC

10IW - 10 IWC

25IW - 25 IWC

### Option (if including an option(s) must include an "X")

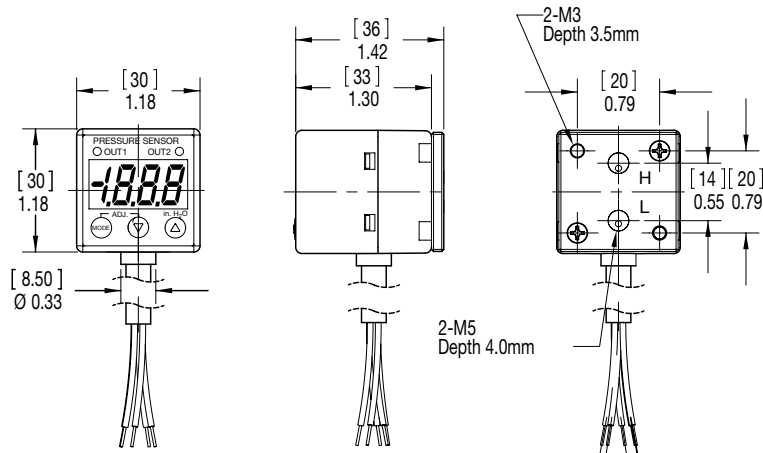
RH - Traceable calibration certificate

X\_\_  
RH

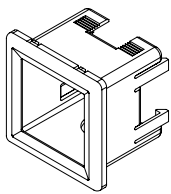
# GC30 Differential Pressure Transducer

**Dimensions in [ ] are millimeters**

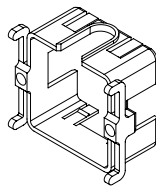
For reference only, consult Ashcroft for specific dimensional drawings



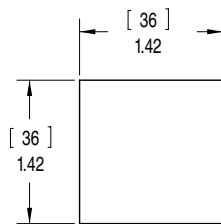
## Panel Mounting Kit (included)



Panel adapter 1 (X1)

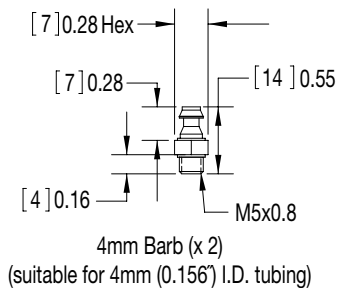


Panel adapter 2 (X1)



Panel cutout dimension

## Barb Dimensions



### Notes:

1. Unit to be shipped with panel mount adapter in box
2. Unit to be supplied with 4mm fittings in box