

GC31 Ultra-Compact Digital Transducer

Features

- Combination of digital pressure gauge, switch and transducer
- Simple “push-button” configurability allows user to adjust switch settings and analog scaling
- Numerous standard ranges available

Typical Uses

- Hydraulic presses
- Stamping equipment
- Lifts
- Tire press vulcanization
- Pressure monitoring
- Water, refrigerant or ammonia based cooling systems
- Pressure monitoring on lubrication systems

Performance Specifications

Reference Temperature:	73 °F (23 °C)
Analog Output:	1-5 Vdc
Accuracy:	±1.0% of span Accuracy includes linearity, hysteresis and repeatability (URL)
Response Time:	50 ms
Output Resolution:	25 mV
Analog Scaling:	User may configure analog output scaling to any range within F.S. of sensor range

Pressure Switch Output:

Type:	NPN or PNP open collector up to 30 Vdc/80 mA
Setting Accuracy:	±1.0% of span (URL)
Number of Contacts:	2
Time Delay:	5 ms-2 sec (selectable)
Hysteresis:	Variable deadband (by user)
Switch Setting:	User may adjust switch actuation and dead-band to any points within F.S. sensor range

Display:

Type:	3½ digit, 10 mm LED
Accuracy:	±1.0% of span + last digit (URL)
Display Setting:	User may re-configure display scaling, set to capture MIN or MAX value, and adjust display update rate
CE Compliance:	EN61326-1 2006, EN61326-2-3 2006

Environmental Specifications

Temperature Effects: (ref. 73°F (23°C))	Zero/Span: ±0.03% span/F (±0.05% F.S./C)
Temperature Limits:	Storage: -22 °F to 140 °F (-30 °C to 60°C) Operating: -4 °F to 140 °F (-20 °C to 60 °C) Compensated: 14 °F to 122 °F (-10 °C to 50 °C)
Humidity:	0-85% RH, Non-condensing



GC31
Pressure Transducer



Key Benefits

- Ultra-compact indicating transducer with analog scaling and switch options
- Field-proven thin film sensor
- Monitors a wide variety of applications

Functional Specifications

Overpressure:	Proof:	Burst:
<500 psi	2 X Range (URL)	8 X Range (URL)
>1,000 psi	1.5 X Range (URL)	8 X Range (URL)

Electrical Specifications

Power Supply Requirements:

Supply Voltage:	11-27 Vdc
Current Consumption:	30 mA (Max.)
Switch Contacts:	(2) NPN or PNP open collector outputs
NPN:	30 Vdc / 80 mA (Max.)
PNP:	Voltage drop 1 Vdc (Max.) / 80 mA (Max.)

GC31 Ultra-Compact Digital Transducer

Physical Specifications	
Pressure Connection:	¼ NPT Male
Environmental Rating:	IP40
Weight:	Approx. 110 grams
Mounting:	Panel mounting bracket included (Back connect only)
Electrical Connection Size:	6' cable pigtail
Optional Features	
Calibration Report:	Traceable calibration certificate

Wetted Material		
Diaphragm	Process Connection	Media Compatibility
17-4PH SS	304 SS	Fluids and gases compatible with 316 SS (sensor housing) and 17-4PH SS (sensor diaphragm)
Non-Wetted		
Enclosure		
ABS, polycarbonate, aluminum		



Featuring highly reliable CVD thin film pressure sensing technology

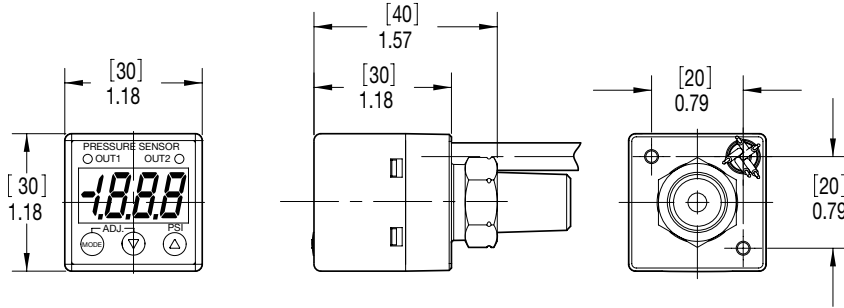
Ordering Code	Example:	GC31	7	M02B	1	N	F4	15#&V	- XRH
Model									
GC31 - Ultra-compact digital pressure sensor		GC31							
Accuracy			7						
7 - ±1.0% of span									
Pressure Fitting									
M02L - ¼ NPT Male w/ lower connect									
M02B - ¼ NPT Male w/ back connect				M02B					
Output Signal									
1 - 1-5 Vdc					1				
Switch Type									
P - PNP type open collector (80 mA Max)									
N - NPN type open collector (30 Vdc/80 mA Max)						N			
Electrical Connection									
F4 - 6 ft. braided shielded cable							F4		
Pressure Range									
Compound									
15#&V - Vac-15 psig								15#&V	
75#&V - Vac-75 psig									
150#&V - Vac-150 psig									
300#&V - Vac-300 psig									
Gauge									
50#G - 0-50 psig									
100#G - 0-100 psig									
150#G - 0-150 psig									
300#G - 0-300 psig									
500#G - 0-500 psig									
1000#G - 0-1,000 psig									
1500#G - 0-1,500 psig									
Option (if including an option(s) must include an "X")									X__
RH - Traceable calibration certificate									RH

GC31 Ultra-Compact Digital Transducer

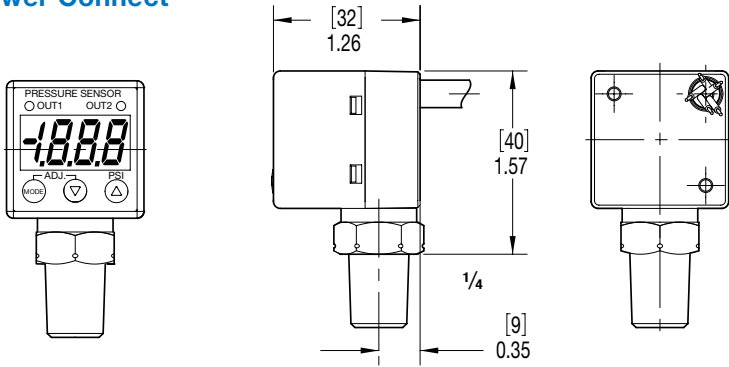
DIMENSIONS in [] are millimeters

For reference only, consult Ashcroft for specific dimensional drawings

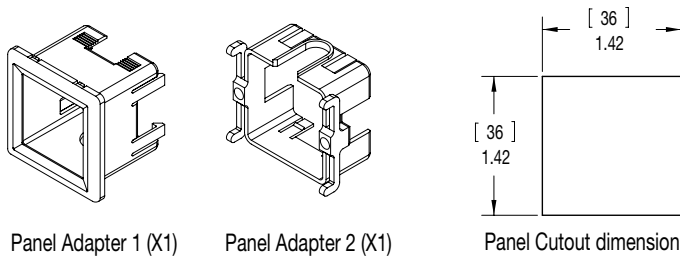
Back Connect



Lower Connect



Panel Mounting Kit (back connection only)



Notes:

Back connect version (M02B/MG2B) to be supplied with panel mount adapter in box