

2265 Electric Contacts

FEATURES

- Allows for local indication while providing switching operations
- Adjustable magnetic contacts
- Easy installation with multiple Ashcroft pressure gauges and Ashcroft Duratemp® thermometers

TYPICAL USES

- Oil and gas
- Refineries
- Chemical and petrochemical plants
- Water and wastewater pressure control

SPECIFICATIONS

| | |
|----------------------|---|
| Instrument Accuracy: | 0.5% -1.5% for use with pressure gauge 1.5% - 2.0% or use with Duratemp® thermometer |
| Size: | 4½" and 6.0" |
| Electrical Contact: | 250 V maximum voltage |
| Switching Capacity: | 30 W dc maximum switch power 50 VA ac maximum switching power 1 A maximum current |
| Window: | Acrylic |
| Pointer: | Micrometer, adjustable, aluminum |
| Weather Protection: | For use with dry case only (gauge). Duratemp®, non adjustable. Not intended for use outside |
| Installs On: | Pressure gauges: 1009, 1279, 1377,1379, 1125,1127 Duratemp® thermometers: 600A-02, 600-03 and 600-04 |

| FUNCTION | DURAGAUGE® PRESSURE GAUGE | | | | DURATEMP® THERMOMETER | |
|---|---------------------------|---------|------------------|---------|-----------------------|---------|
| | Above 30 psi | | 30 psi and below | | Indication | Contact |
| | Indication | Contact | Indication | Contact | | |
| Pointer Carrying Actuating Arm | 0.5% | 1% | 1% | 1.5% | 1.5% | 2% |
| Pointer Carrying One Contact 20% Beyond Contact Point | 1% | - | 1.5% | - | 2% | - |
| Contact Differential Make and Break | - | -1% | | -1.5% | - | 2% |

NOTE: These tolerances are to be added to the standard tolerance of the gauge or thermometer.

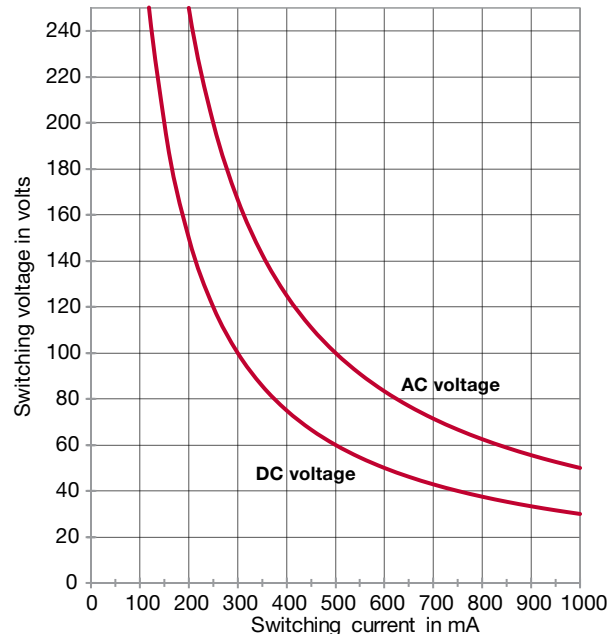


2265
4½" dial size shown
(Gauge not included)

KEY BENEFITS

- Ability to adjust settings without removing instrument from service
- Allows for closed or open circuit
- Use with either pressure or temperature instruments

Switching capacity graphs for contact devices

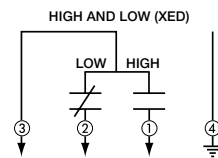


2265 Electric Contacts

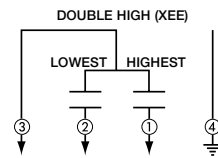
| ORDERING CODE | Example: | 45 | 2265 | XED |
|----------------------------------|--|----|------|-----|
| Dial Size | | | | |
| 45 - 4½" | | 45 | | |
| 60 - 6" | | | | |
| Model | | | | |
| 2265 | | | 2265 | |
| Code Contact Arrangements | | | | |
| XED | High and low contact | | | XED |
| XEE | Double high contact | | | |
| XEF | Double low contact | | | |
| XEG | "OFF" at low and high, and "ON" in between | | | |
| X1C | Single contact, normally closed | | | |
| X1E | Single contact, normally open | | | |

DEFINITIONS

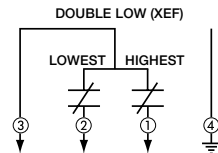
XED High and Low Arrangement – the low contact is closed and the high contact is open when the pointer is at its lowest dial reading.



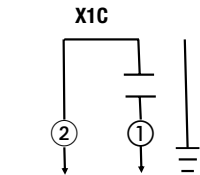
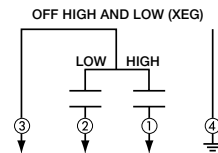
XEE Double High Arrangement – both contacts are open when the pointer is at its lowest dial reading. Due to the high hairspring torque of these contacts, the gauge pointer may be slightly above its lowest dial reading.



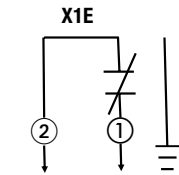
XEF Double Low Arrangement – both contacts are closed when the pointer is at its lowest dial reading.



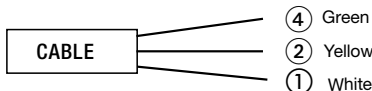
XEG "Off" at High and Low and "On" In-between Arrangement – the contacts are closed in the center portion of the dial and open at the extremes of the range



X1C Single Contact. Open when pointer is at its lowest dial reading.



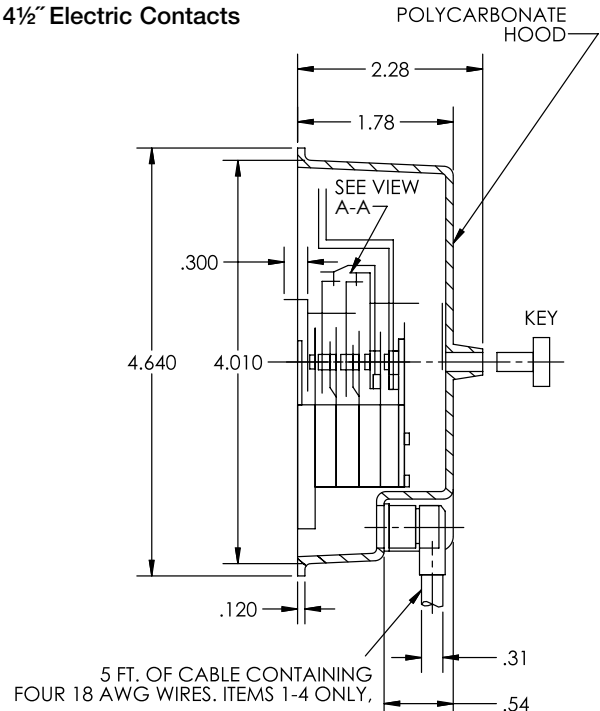
X1E Single Contact. Closed when pointer is at its lowest dial reading.



DIMENSIONS in [] are millimeters

For reference only, consult Ashcroft for specific dimensional drawings

4½" Electric Contacts



6.0" Electric Contacts

