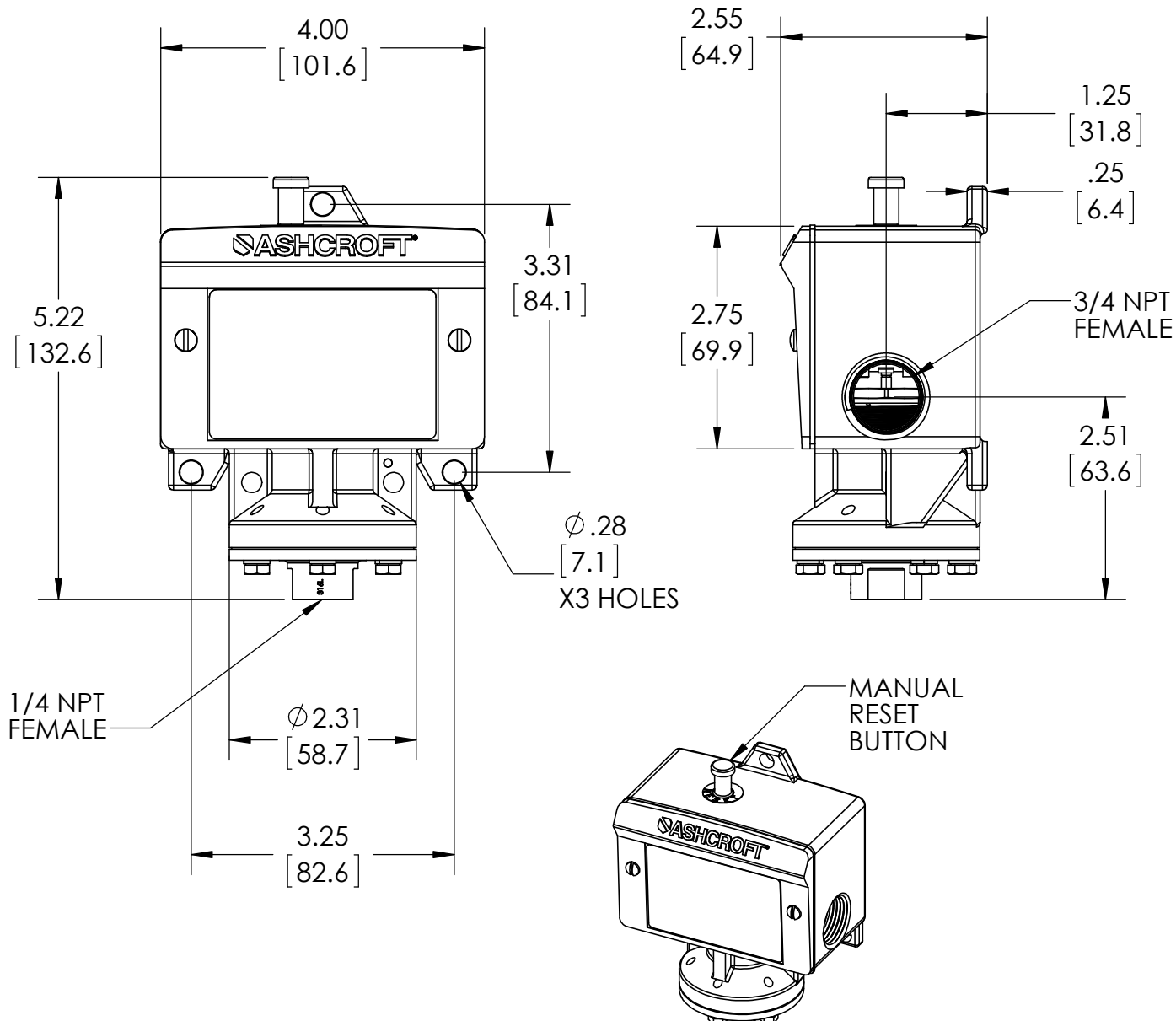


This drawing includes confidential information which is the property of ASHCROFT INC. This copy is loaned for a specific purpose, with the understanding that it will not be reproduced or used for any other purpose or disclosed to others, and it will be returned on demand.

**ASHCROFT**® INC.

250 EAST MAIN STREET  
STRATFORD, CT 06614



NOTE:  
SWITCH CODE 28 IS FOR MANUAL RESET TRIP  
FOR INCREASING PRESSURE.  
SWITCH CODE 29 IS FOR MANUAL RESET TRIP  
FOR DECREASING PRESSURE.

DIMENSIONS IN [ ] ARE MILLIMETERS

APPLICABLE SWITCH PRODUCT CODES				
SWITCH TYPE	SWITCH ELEMENT	SEAL MATERIAL	VARIATIONS	RANGE
B4	28, 29	S, P	-	15-600 PSI

REV.	ECO	DESCRIPTION	BY	DATE
B	0008209	CORRECT RANGE CALLOUTS	HOY	7/21/2015

This print certified correct for

Customer's Name

Customer's Order No.

Ashcroft Order No.

Certified by

Date

General Dimensions  
**B4 PRESSURE SWITCH**  
STAINLESS STEEL, MONEL DIAPHRAGM MAT'L  
RANGES 15 – 600PSI; MANUAL RESET

Drawn	HOY	Date	4/1/15	Date of Issue	
Checked	TB	Date	4/1/15	SHEET-1	Rev.
Approved	SSH	Date	4/1/15	<b>70A4011</b>	<b>B</b>