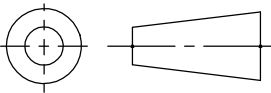


Third angle projection



This drawing includes confidential information which is the property of ASHCROFT INC. This copy is loaned for the specific purpose, with the understanding that it will not be reproduced or used for any other purpose or disclosed to others, and it will be returned on demand.



250 EAST MAIN STREET,
STRATFORD, CT 06614

DOCUMENT REVISION LOG

A	ECO-0001376	INSTALLATION DIAGRAM INDUSTRIAL DIGITAL GAUGE FM CLASS 1 DIVISION 1 GROUPS A, B, C, & D	DMMc	4/12/2004
B	ECO-0001577	ADD CANADIAN ELECTRICAL CODE TO SHEETS 3, 4, 5. LABEL/SHOW AREA DESIGNATIONS ON INSTALLATION DIAGRAM. ADDED A TEX MARKING	DMMc	9/8/2004
C	ECO-00001693	ADD STATEMENT FOR A TEX CONFORMITY	DMMc	12/22/2004
D	ECO-00002263	UPDATED COMPANY LOGO	JS	3/7/2006
E	ECO-0003215	ADDED SIRA CERTIFICATION NOTE.	JS	1/30/2008
F	ECO-0004475	CHANGED SIRA TO A TEX CERTIFICATION.	RJ	6/1/2010
G	ECO-0006780	MODIFIED NOTES, FM CONTROL UPDATE, UPDATED DWG, SEE ECR	JE	10/17/2013

INSTALLATION DIAGRAM, INDUSTRIAL DIGITAL GAUGE

INTRINSICALLY SAFE LOCATION
 CLASS I DIVISION 1 GROUPS A, B, C, D
 CLASS II DIVISION 1 GROUPS E, F, G
 CLASS III DIVISION 1
 T3C at 140°F (60°C) MAX. AMBIENT TYPE 4

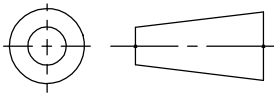
NONINCENDIVE HAZARDOUS LOCATION
 CLASS 1 DIVISION 2, GROUPS A, B, C, D
 CLASS II DIVISION 2 GROUPS F, G

DIMENSIONAL TOLERANCES UNLESS OTHERWISE SPECIFIED ALL DIMENSIONS ARE IN INCHES		INSTALLATION DIAGRAM INDUSTRIAL DIGITAL GAUGE FACTORY MUTUAL INTRINSICALLY SAFE LOCATION		
TOLERANCES ARE:				
3 place decimal .000	±.007			
2 place decimal .00	±.015			
1 place decimal .0	±.030	SIZE	DWG. NO.	REV.
Angle	Chamfer	A	825A023	G
± 1 deg	± 5 deg	Scale: NONE Sheet 1 of 5		
DO NOT SCALE DRAWING				

CONTROLLED DOCUMENT	
No changes permitted without prior approval by:	
AGENCY:	FILE/CERT#
FM	3047550

CAD GENERATED DRAWING, DO NOT MANUALLY UPDATE	
DRAWN BY	DATE
C.FASCIANO	03/25/04

Third angle projection



This drawing includes confidential information which is the property of ASHCROFT INC. This copy is loaned for the specific purpose, with the understanding that it will not be reproduced or used for any other purpose or disclosed to others, and it will be returned on demand.



250 EAST MAIN STREET,
STRATFORD, CT 06614

Sheet No.	Description	Revision
1	ECN REVISION SHEET & ENTITY PERAMETERS	G
2	INDEX SHEET	G
3	4-20mA UNIT - INSTALLATION DIAGRAM	G
4	XPWR UNIT - INSTALLATION DIAGRAM	G
5	BATTERY DEVICE - INSTALLATION DIAGRAM	G

DIMENSIONAL TOLERANCES
UNLESS OTHERWISE SPECIFIED
ALL DIMENSIONS ARE IN INCHES

TOLERANCES ARE:

3 place decimal .000 ±.007

2 place decimal .00 ±.015

1 place decimal .0 ±.030

Angle

± 1 deg

Chamfer

± 5 deg

INSTALLATION DIAGRAM
INDUSTRIAL DIGITAL GAUGE
FACTORY MUTUAL
INTRINSICALLY SAFE LOCATION

SIZE

DWG. NO.

REV.

A

825A023

G

Scale: NONE Sheet 2 of 5

CONTROLLED DOCUMENT

No changes permitted without prior approval by:

AGENCY:

FM

FILE/CERT#

3047550

CAD GENERATED DRAWING,
DO NOT MANUALLY UPDATE

DRAWN BY

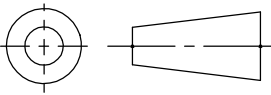
DATE

C.FASCIANO

03/25/04

DO NOT SCALE DRAWING

Third angle projection



This drawing includes confidential information which is the property of ASHCROFT INC. This copy is loaned for the specific purpose, with the understanding that it will not be reproduced or used for any other purpose or disclosed to others, and it will be returned on demand.

ASHCROFT® INC.

250 EAST MAIN STREET,
STRATFORD, CT 06614

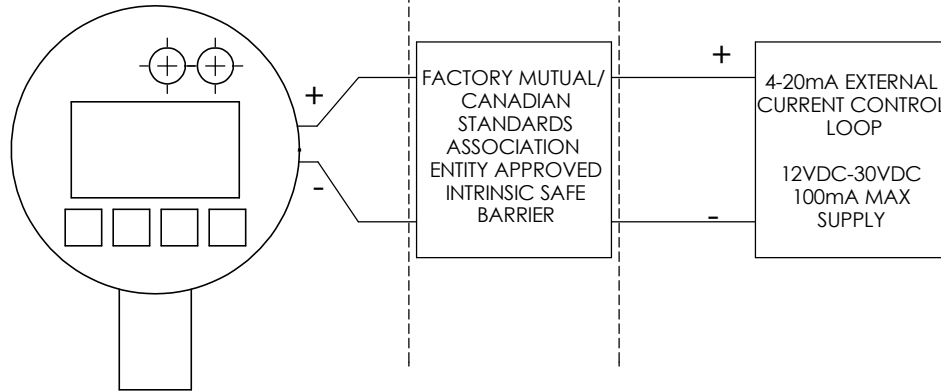
NOTES:

1. ENTITY CONCEPTS DEFINITION: THE ENTITY CONCEPT ALLOWS INTERCONNECTION OF INTRINSICALLY SAFE APPARATUS TO ASSOCIATED APPARATUS NOT SPECIFICALLY EXAMINED IN SUCH COMBINATION. THE CRITERIA FOR INTERCONNECTION IS THAT THE VOLTAGE AND CURRENT WHICH INTRINSICALLY SAFE APPARATUS CAN RECEIVE AND REMAIN INTRINSICALLY SAFE, CONSIDERING FAULTS, MUST BE EQUAL TO OR GREATER THAN THE VOLTAGE (VOC) AND CURRENT (ISC) LEVELS WHICH CAN BE DELIVERED BY THE ASSOCIATED APPARATUS, CONSIDERING FAULTS AND APPLICABLE FACTORS. IN ADDITION, THE MAXIMUM UNPROTECTED CAPACITANCE (CI) AND INDUCTANCE (LI) OF THE INTRINSICALLY SAFE APPARATUS, INCLUDING INTERCONNECTION WIRING, MUST BE EQUAL TO OR LESS THAN THE CAPACITANCE AND INDUCTANCE WHICH CAN BE SAFELY CONNECTED TO ASSOCIATED APPARATUS.
2. USE OF THE INDUSTRIAL DIGITAL GAUGE IN THE FIELD SHALL BE IN ACCORDANCE WITH THE MANUFACTURER'S INSTRUCTIONS AND THE INDUSTRIAL DIGITAL GAUGE MANUFACTURER'S INSTALLATION DIAGRAM.
3. INTRINSIC SAFETY IS CONTINGENT UPON THE INDUSTRIAL DIGITAL GAUGE'S INPUT / OUTPUT CABLE CLAMP, FRONT HOUSING, BATTERY COMPARTMENT AND REAR COVERS BEING PROPERLY INSTALLED ON THE INDUSTRIAL DIGITAL GAUGE AS REFERENCED IN THE INDUSTRIAL DIGITAL GAUGE OPERATING MANUAL.
4. INSTALLATION SHOULD BE IN ACCORDANCE WITH ANSI/ISA RP12.06.01 "INSTALLATION OF INTRINSICALLY SAFE SYSTEMS FOR HAZARDOUS (CLASSIFIED) LOCATION", THE NATIONAL ELECTRICAL CODE (ANSI/NFPA 70) AND THE CANADIAN ELECTRICAL CODE.
5. SUPPLY EQUIPMENT SHALL NOT USE OR GENERATE IN EXCESS OF 250V.
6. **WARNING:** PART OF THE ENCLOSURE IS CONSTRUCTED FROM PLASTIC. TO PREVENT THE RISK OF ELECTROSTATIC SPARKING THE PLASTIC SURFACE SHOULD ONLY BE CLEANED WITH A DAMP CLOTH.
7. **WARNING:** THE APPARATUS ENCLOSURE MAY CONTAIN ALUMINUM WHICH IS CONSIDERED TO CONSTITUTE A POTENTIAL RISK OF IGNITION BY IMPACT OR FRICTION. CARE MUST BE TAKEN INTO ACCOUNT DURING INSTALLATION AND USE TO PREVENT IMPACT OR FRICTION.

HAZARDOUS LOCATION

BARRIER

CONTROL ROOM



INDUSTRIAL DIGITAL GAUGE:
30 217X - FM
45 217X - FM

ENTITY PARAMETERS:
 $V_{max} = 30V$ $I_{max} = 100mA$
 $P_i = 0.9W$
 $C_i = 0$ $L_i = 1.5\mu H$

CONTROLLED DOCUMENT

No changes permitted without prior approval by:

AGENCY:	FILE/CERT#
FM	3047550

DIMENSIONAL TOLERANCES UNLESS OTHERWISE SPECIFIED ALL DIMENSIONS ARE IN INCHES

TOLERANCES ARE:
3 place decimal .000 ±.007
2 place decimal .00 ±.015
1 place decimal .0 ±.030

Angle	Chamfer
± 1 deg	± 5 deg

CAD GENERATED DRAWING, DO NOT MANUALLY UPDATE

DRAWN BY DATE

C.FASCIANO 03/25/04

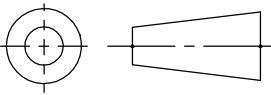
DO NOT SCALE DRAWING

4-20mA UNIT
INSTALLATION DIAGRAM
INDUSTRIAL DIGITAL GAUGE
FACTORY MUTUAL
INTRINSICALLY SAFE LOCATION

SIZE	DWG. NO.	REV.
A	825A023	G

Scale: NONE Sheet 3 of 5

Third angle projection



This drawing includes confidential information which is the property of ASHCROFT INC. This copy is loaned for the specific purpose, with the understanding that it will not be reproduced or used for any other purpose or disclosed to others, and it will be returned on demand.

ASHCROFT® INC.

250 EAST MAIN STREET,
STRATFORD, CT 06614

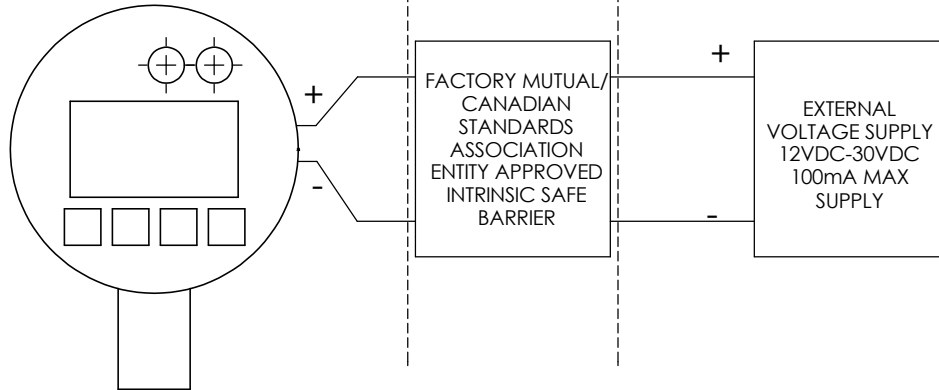
NOTES:

1. ENTITY CONCEPTS DEFINITION: THE ENTITY CONCEPT ALLOWS INTERCONNECTION OF INTRINSICALLY SAFE APPARATUS TO ASSOCIATED APPARATUS NOT SPECIFICALLY EXAMINED IN SUCH COMBINATION. THE CRITERIA FOR INTERCONNECTION IS THAT THE VOLTAGE AND CURRENT WHICH INTRINSICALLY SAFE APPARATUS CAN RECEIVE AND REMAIN INTRINSICALLY SAFE, CONSIDERING FAULTS, MUST BE EQUAL TO OR GREATER THAN THE VOLTAGE (VOC) AND CURRENT (ISC) LEVELS WHICH CAN BE DELIVERED BY THE ASSOCIATED APPARATUS, CONSIDERING FAULTS AND APPLICABLE FACTORS. IN ADDITION, THE MAXIMUM UNPROTECTED CAPACITANCE (CI) AND INDUCTANCE (LI) OF THE INTRINSICALLY SAFE APPARATUS, INCLUDING INTERCONNECTION WIRING, MUST BE EQUAL TO OR LESS THAN THE CAPACITANCE AND INDUCTANCE WHICH CAN BE SAFELY CONNECTED TO ASSOCIATED APPARATUS.
2. USE OF THE INDUSTRIAL DIGITAL GAUGE IN THE FIELD SHALL BE IN ACCORDANCE WITH THE MANUFACTURER'S INSTRUCTIONS AND THE INDUSTRIAL DIGITAL GAUGE MANUFACTURER'S INSTALLATION DIAGRAM.
3. INTRINSIC SAFETY IS CONTINGENT UPON THE INDUSTRIAL DIGITAL GAUGE'S INPUT / OUTPUT CABLE CLAMP, FRONT HOUSING, BATTERY COMPARTMENT AND REAR COVERS BEING PROPERLY INSTALLED ON THE INDUSTRIAL DIGITAL GAUGE AS REFERENCED IN THE INDUSTRIAL DIGITAL GAUGE OPERATING MANUAL.
4. INSTALLATION SHOULD BE IN ACCORDANCE WITH ANSI/ISA RP12.06.01 "INSTALLATION OF INTRINSICALLY SAFE SYSTEMS FOR HAZARDOUS (CLASSIFIED) LOCATION", THE NATIONAL ELECTRICAL CODE (ANSI/NFPA 70) AND THE CANADIAN ELECTRICAL CODE.
5. SUPPLY EQUIPMENT SHALL NOT USE OR GENERATE IN EXCESS OF 250V.
6. **WARNING:** PART OF THE ENCLOSURE IS CONSTRUCTED FROM PLASTIC. TO PREVENT THE RISK OF ELECTROSTATIC SPARKING THE PLASTIC SURFACE SHOULD ONLY BE CLEANED WITH A DAMP CLOTH.
7. **WARNING:** THE APPARATUS ENCLOSURE MAY CONTAIN ALUMINUM WHICH IS CONSIDERED TO CONSTITUTE A POTENTIAL RISK OF IGNITION BY IMPACT OR FRICTION. CARE MUST BE TAKEN INTO ACCOUNT DURING INSTALLATION AND USE TO PREVENT IMPACT OR FRICTION.

HAZARDOUS
LOCATION

BARRIER

CONTROL
ROOM



INDUSTRIAL DIGITAL GAUGE:

30 227X - FM
45 227X - FM

ENTITY PARAMETERS:

$V_{max} = 30V$ $I_{max} = 100mA$
 $P_i = 0.9W$
 $C_i = 0$ $L_i = 1.5\mu H$

DIMENSIONAL TOLERANCES
UNLESS OTHERWISE SPECIFIED
ALL DIMENSIONS ARE IN INCHES

TOLERANCES ARE:
3 place decimal .000 ±.007
2 place decimal .00 ±.015
1 place decimal .0 ±.030

Angle Chamfer
± 1 deg ± 5 deg

XPWR UNIT
INSTALLATION DIAGRAM
INDUSTRIAL DIGITAL GAUGE
FACTORY MUTUAL
INTRINSICALLY SAFE LOCATION

SIZE	DWG. NO.	REV.
A	825A023	G

Scale: NONE Sheet 4 of 5

CONTROLLED DOCUMENT

No changes permitted without prior approval by:

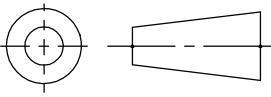
AGENCY:	FILE/CERT#
FM	3047550

CAD GENERATED DRAWING,
DO NOT MANUALLY UPDATE

DRAWN BY	DATE
C.FASCIANO	03/25/04

DO NOT SCALE DRAWING

Third angle projection

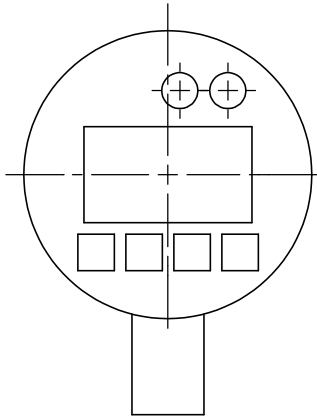


This drawing includes confidential information which is the property of ASHCROFT INC. This copy is loaned for the specific purpose, with the understanding that it will not be reproduced or used for any other purpose or disclosed to others, and it will be returned on demand.



250 EAST MAIN STREET,
STRATFORD, CT 06614

HAZARDOUS LOCATION



INDUSTRIAL DIGITAL GAUGE:
30 207X - FM
45 207X - FM

BATTERY INFORMATION AND REPLACEMENT:

- 4.5 INCH SYSTEM: ONLY USE (2) "C" CELL ALKALINE DURACELL MN1400 OR ENERGIZER E93 OR EN93. NON-RECHARGEABLE BATTERIES.
- 3.0 INCH SYSTEM: ONLY USE (2) "AA" CELL ALALINE DURACELL MN1500 NON-RECHARGEABLE BATTERIES.
- DO NOT MIX AGES OR BRANDS OF BATTERIES.
- DO NOT REPLACE BATTERIES IN HAZARDOUS LOCATION

NOTES:

1. ENTITY CONCEPTS DEFINITION: THE ENTITY CONCEPT ALLOWS INTERCONNECTION OF INTRINSICALLY SAFE APPARATUS TO ASSOCIATED APPARATUS NOT SPECIFICALLY EXAMINED IN SUCH COMBINATION. THE CRITERIA FOR INTERCONNECTION IS THAT HE VOLTAGE AND CURRENT WHICH INTRINSICALLY SAFE APPARATUS CAN RECEIVE AND REMAIN INTRINSICALLY SAFE, CONSIDERING FAULTS, MUST BE EQUAL TO OR GREATER THAN THE VOLTAGE (VOC) AND CURRENT (ISC) LEVELS WHICH CAN BE DELIVERED BY THE ASSOCIATED APPARATUS, CONSIDERING FAULTS AND APPLICABLE FACTORS. IN ADDITION, THE MAXIMUM UNPROTECTED CAPACITANCE (CI) AND INDUCTANCE (LI) OF THE INTRINSICALLY SAFE APPARATUS, INCLUDING INTERCONNECTION WIRING, MUST BE EQUAL TO OR LESS THAN THE CAPACITANCE AND INDUCTANCE WHICH CAN BE SAFELY CONNECTED TO ASSOCIATED APPARATUS.
2. USE OF THE INDUSTRIAL DIGITAL GAUGE IN THE FIELD SHALL BE IN ACCORDANCE WITH THE MANUFACTURER'S INSTRUCTIONS AND THE INDUSTRIAL DIGITAL GAUGE MANUFACTURER'S INSTALLATION DIAGRAM.
3. INTRINSIC SAFETY IS CONTINGENT UPON THE INDUSTRIAL DIGITAL GAUGE'S INPUT / OUTPUT CABLE CLAMP, FRONT HOUSING, BATTERY COMPARTMENT AND REAR COVERS BEING PROPERLY INSTALLED ON THE INDUSTRIAL DIGITAL GAUGE AS REFERENCED IN THE INDUSTRIAL DIGITAL GAUGE OPERATING MANUAL.
4. INSTALLATION SHOULD BE IN ACCORDANCE WITH ANSI/ISA RP12.06.01 "INSTALLATION OF INTRINSICALLY SAFE SYSTEMS FOR HAZARDOUS (CLASSIFIED) LOCATION" , THE NATIONAL ELECTRICAL CODE (ANSI/NFPA 70) AND THE CANADIAN ELECTRICAL CODE.
5. **WARNING:** PART OF THE ENCLOSURE IS CONSTRUCTED FROM PLASTIC. TO PREVENT THE RISK OF ELECTROSTATIC SPARKING THE PLASTIC SURFACE SHOULD ONLY BE CLEANED WITH A DAMP CLOTH.
6. **WARNING:** THE APPARATUS ENCLOSURE MAY CONTAIN ALUMINUM WHICH IS CONSIDERED TO CONSTITUTE A POTENTIAL RISK OF IGNITION BY IMPACT OR FRICTION. CARE MUST BE TAKEN INTO ACCOUNT DURING INSTALLATION AND USE TO PREVENT IMPACT OR FRICTION.

DIMENSIONAL TOLERANCES UNLESS OTHERWISE SPECIFIED ALL DIMENSIONS ARE IN INCHES

TOLERANCES ARE:

- 3 place decimal .000 ±.007
- 2 place decimal .00 ±.015
- 1 place decimal .0 ±.030

- Angle ± 1 deg
- Chamfer ± 5 deg

**BATTERY DEVICE
INSTALLATION DIAGRAM
INDUSTRIAL DIGITAL GAUGE
FACTORY MUTUAL
INTRINSICALLY SAFE LOCATION**

SIZE	DWG. NO.	REV.
A	825A023	G

CONTROLLED DOCUMENT	
No changes permitted without prior approval by:	
AGENCY:	FILE/CERT#
FM	3047550

CAD GENERATED DRAWING,
DO NOT MANUALLY UPDATE

DRAWN BY	DATE
C.FASCIANO	03/26/04

DO NOT SCALE DRAWING

Scale: NONE Sheet 5 of 5