

Data Sheet

1033 Sanitary Pressure Gauge

FEATURES

- DIN 11851 Standard Female Nut + Seal
- Can be Clean-in-place (CIP) or Steam-in-place (SIP)
- 15 RA (microinches) electropolished diaphragm surface
- Autoclave or sterilize with 3½" dial with polysulfone window option
- Easy Zero™ provides external adjustability of instrument span (3½" dial)
- Material certificates and certificate of conformance supplied as standard to EN 10204:2004 3.1
- **PLUS!**™ Performance option

TYPICAL USES

- Specialized OEM equipment
- Breweries
- Food and dairy
- Pharmaceutical
- Chemicals
- Cosmetics



1033

3½", dial sizes shown with 25, 40, 50 DN seals

SPECIFICATIONS

Accuracy: (Of Span)		Liquid Filled	
		Dry	or XLL
	All ranges to 100 psi	±2%	±2.5%
	Pressure over 100 psi	±1.5%	±2%
Dial Sizes:	2½", 3½"		
Ranges:	Vacuum, compound to 600 psi		
Fill:	Glycerin (USP food grade), Halocarbon®, mineral oil, food grade silicone		
Process Connection Location:	Lower or lower back		
Process Connection:	DN 25, 40, 50		
Pointer:	2½": Black-painted aluminum, adjustable 3½": Black-painted aluminum with ext. adjust		
Dial:	White with black markings		
Case Style:	Open front		
Window Material:	Polycarbonate		
Weather Protection:	2½" & 3½" IP65		
Dampening Options:	Liquid fill or PLUS! ™ Performance (Design is not recommended for gauges expected to be exposed to temperature over 200 °F (93 °C)).		

KEY BENEFITS

- True Zero™ reduces reading errors by using a "zero box" instead of conventional pins
- Heat lot traceable material certificates



WETTED COMPONENTS

Diaphragm	Process Connection	Joints
316L Stainless steel	316L Stainless steel	Welded

NON-WETTED COMPONENTS

Case	Ring
300 Stainless steel polished	300 Stainless steel polished bayonet, removable

Data Sheet

1033 Sanitary Pressure Gauge

ORDERING CODE	Example:	251033	S	25	L	-XC4	100#
Dial Size/Model							
251033 - 2½"		251033					
351033 - 3½"							
System							
S - 316L Stainless steel tube and socket, 316L diaphragm and seal housing			S				
Case Fill							
Blank - Dry gauge							
L - Liquid fill (Food Grade Glycerine)							
Process Connection Size							
25 - DN 25 Female Nut + Seal (Max Pressure 600 psi)				25			
40 - DN 40 Female Nut + Seal (Max Pressure 600 psi)							
50 - DN 50 Female Nut + Seal (Max Pressure 350 psi)							
Process Connection Location							
L - Lower					L		
B - Lower Back							
Options (If choosing an option(s) must include an "X")						-X _ _	
CF - Halocarbon® system fill							
CZ - Food grade silicone system fill							
C4 - Traceable calibration certificate							
FJ - Distilled water system fill							
GX - Halocarbon® case fill							
LL - PLUS! ™ performance							
MO - Mineral oil case fill							
MY - Mineral oil system fill							
MQ - Positive material identification (PMI) (diaphragm and top housing only)							
NH - Stainless metal tag							
NM - Neobee® M-20 system fill							
NZ - PLUS! ™ performance silicone free							
PS - Polysulfone window (3½" only)							
SG - Safety glass							
ZF - Food grade silicone case fill							
6B - Cleaned for gaseous oxygen service (requires Halocarbon® or distilled water case and systems fill)							
6W - Cleaned for gases other than oxygen							
Range (Coding examples only, see range table on page 3)							
Vacuum (30 IMV)							
100# - 100 psi							100#

Data Sheet

1033 Sanitary Pressure Gauge

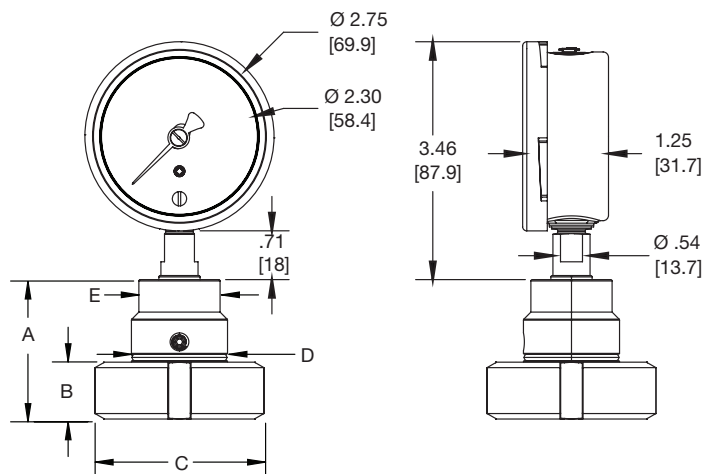
STANDARD PRESSURE RANGES					
	psi	bar	kPa	kg/cm ²	Dual Scale psi Outer Scale
Vacuum	30IMV	-1BR	100KP	-1KSC	30IMV
	30IMV&15#	—	—	—	—
Compound	—	-1&1.5BR	-100&150KP	-1&1.5KSC	30IMV&20#
	30IMV&30#	—	—	—	—
	—	-1&3BR	-100&300KP	-1&3KSC	30IMV&40#
	30IMV&60#	—	—	—	—
	—	-1&5BR	-100&500KP	-1&5KSC	30IMV&70#
	30IMV&100#	—	—	—	—
	—	-1&9BR	-100&900KP	-1&9KSC	30IMV&125#
Positive Pressure	15#	100KP	1BR	1KSC	14# ⁽¹⁾
	—	1.6BR	160KP	1.6KSC	22#
	30#	—	—	—	—
	—	2.5BR	250KP	2.5KSC	35#
	60#	4BR	400KP	4KSC	55#
	—	6BR	600KP	6KSC	85#
	100#	—	—	—	—
	—	10BR	1000KP	10KSC	140#
	160#	—	—	—	—
	200#	—	—	—	—
	—	16BR	1600KP	16KSC	220#
	300#	—	—	—	—
	—	25BR	2500KP	25KSC	350#
	400#	—	—	—	—
	600#	40BR	4000KP	40KSC	550#

Data Sheet

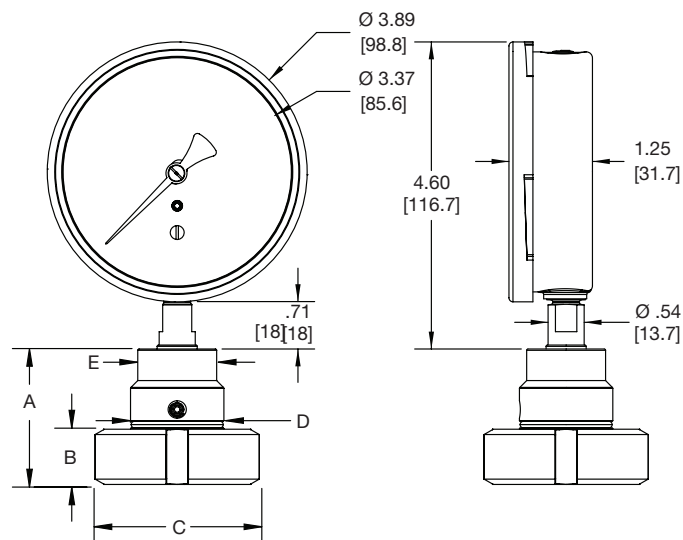
1033 Sanitary Pressure Gauge

DIMENSIONS in [] are milimeters

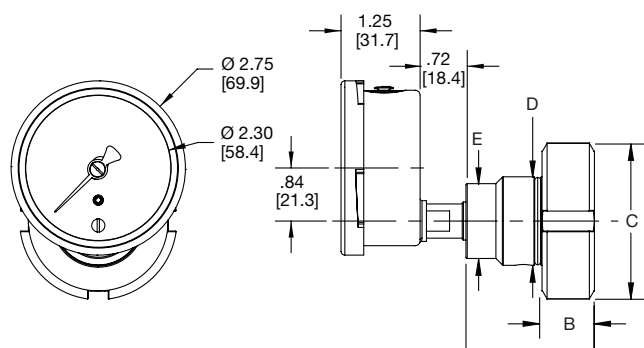
2½" Gauge - Lower Connect



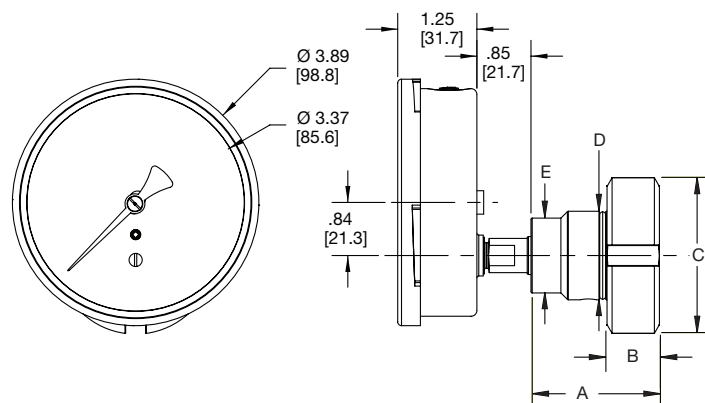
3½" Gauge - Lower Connect



2½" Gauge - Back Connect



3½" Gauge - Back Connect



DIN SIZE	A	B	C	D	E
DN 25	2.03" [51.5]	0.83" [21]	2.48" [63]	1.40" [35.5]	1.18" [30]
DN 40	1.99" [50.5]	0.83" [21]	3.07" [78]	1.91" [48.5]	1.18" [30]
DN 50	1.99" [50.5]	0.87" [22]	3.62" [92]	2.42" [61.5]	1.18" [30]